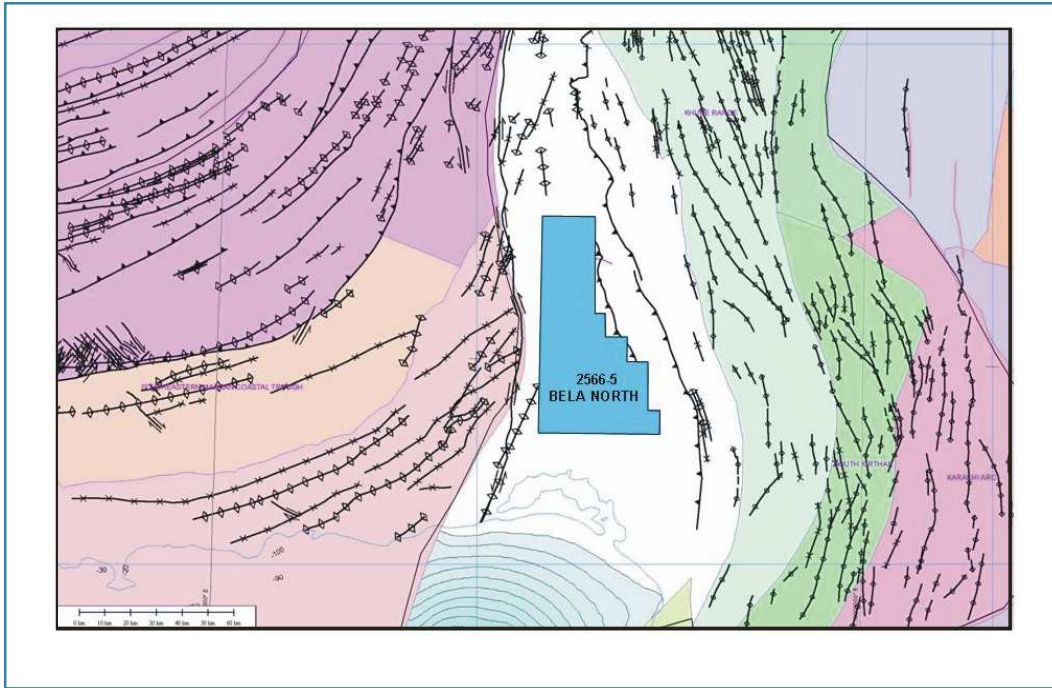


BELA TROUGH

INTRODUCTION

Bela North Block falls in Bela Trough which is the southern most remnant of the 5000 km long peri-Indian Suture Zone.



GEOLOGICAL FRAMEWORK

The Bela Trough is located between east and west of Kirthar Foldbelt and Ornach-Nal fault respectively. In the south it merges into the Arabian Sea. It was developed in response to oblique collision between Indian and Eurasian plates along the left-lateral Chaman Fault along the western boundary of Indian Plate.

STRATIGRAPHY

The Bela Trough is located in the west of the well known Axial Belt of Pakistan, which comprises major stratigraphic units from Jurassic to Pleistocene in age.

The oldest rock exposed in the belt is Shirinab Formation, of Jurassic age. The Sembar Formation of Lower Cretaceous age overlies the upper most Anjira member of Shirinab Formation. The Upper Tertiary rocks are exposed in the western part of the Axial Belt. The ophiolitic complex emplaced during Palaeocene to Lower Eocene, is well exposed in the east in association with Jurassic rocks having unconformable contact with the Upper Tertiary sediments. To the north and west of the trough, Neogene sediments are present.

PETROELUM GEOLOGY

The subsurface geology of Bela Trough is unknown as to date no exploratory well is drilled and the sub-basin is virtually a frontier region for exploration. The existing G&G data would be used for geological modeling and reconstruction of paleohistory of the basin so as to ascertain its petroleum potential.

It is envisaged that truncation / pinch out plays along with extensional features would have developed in the basin. The Eocene-Oligocene reservoirs are likely to be deposited on Bela Ophiolite and these may form potential targets for hydrocarbon exploration.

BELA TROUGH				
CO-ORDINATES FOR NEW BLOCKS				
VERTICES	LONG_DMS	LAT_DMS	BLOCK NAME	AREA COVERED
A	66°15' 00"	25°45' 00"	2566-5 BELA NORTH	2477.57 Sq.Kms
B	66°15' 00"	26°30' 00"		
C	66°27' 00"	26°30' 00"		
D	66°27' 00"	26°10' 00"		
E	66°30' 00"	26°10' 00"		
F	66°30' 00"	26°05' 00"		
G	66°35' 00"	26°05' 00"		
H	66°35' 00"	26°00' 00"		
I	66°40' 00"	26°00' 00"		
J	66°40' 00"	25°50' 00"		
K	66°43' 00"	25°50' 00"		
L	66°43' 00"	25°45' 00"		
A	66°15' 00"	25°45' 00"		

